



DNA pol θ Polyclonal Antibody

Catalog No	YP-Ab-01662
Isotype	IgG
Reactivity	Human;Rat;Mouse;
Applications	IHC;IF;ELISA
Gene Name	POLQ
Protein Name	DNA polymerase theta
Immunogen	The antiserum was produced against synthesized peptide derived from human POLQ. AA range:181-230
Specificity	DNA pol θ Polyclonal Antibody detects endogenous levels of DNA pol θ protein.
Formulation	Liquid in PBS containing 50% glycerol, 0.5% BSA and 0.02% sodium azide.
Source	Polyclonal, Rabbit,IgG
Purification	The antibody was affinity-purified from rabbit antiserum by affinity-chromatography using epitope-specific immunogen.
Dilution	IHC: 1/100 - 1/300. ELISA: 1/20000.. IF 1:50-200
Concentration	1 mg/ml
Purity	$\geq 90\%$
Storage Stability	-20°C/1 year
Synonyms	POLQ; POLH; DNA polymerase theta; DNA polymerase eta
Observed Band	
Cell Pathway	Nucleus . Chromosome . Enriched in chromatin in response to ultraviolet (UV) light (PubMed:25642963). Binds to chromatin during early G1 (PubMed:24989122). .
Tissue Specificity	Highly expressed in testis.
Function	
Background	POLQ (Polymerase (DNA) Theta) is a Protein Coding gene. Among its related pathways are Platinum Pathway, Pharmacokinetics/Pharmacodynamics and DNA Double-Strand Break Repair. GO annotations related to this gene include nucleic acid binding and damaged DNA binding. An important paralog of this gene is SNRNP200. NA polymerase that promotes microhomology-mediated end-joining (MMEJ), an alternative non-homologous end-joining (NHEJ) machinery triggered in response to double-strand breaks in DNA (PubMed: 25642963, PubMed: 25643323). MMEJ is an error-prone repair pathway that produces deletions of sequences from the strand being repaired and promotes genomic rearrangements, such as telomere fusions, some of them leading to cellular transformation (PubMed: 25642963, PubMed: 25643323). POLQ acts as an inhibitor of homology-recombination repair (HR) pathway by limiting RAD51



accumulation at resected ends (PubMed: 25642963). POLQ-mediated MMEJ may be required to promote the survival of cells with a compromised HR repair pathway, thereby preventing genomic havoc by resolving unrepaired lesions (By similarity). The polymerase acts by binding directly the 2 ends of resected double-strand breaks, allowing microhomologous sequences in the overhangs to form base pairs. It then extends each strand from the base-paired region using the opposing overhang as a template. Requires partially resected DNA containing 2 to 6 base pairs of microhomology to perform MMEJ (PubMed: 25643323). The polymerase activity is highly promiscuous: unlike most polymerases, promotes extension of ssDNA and partial ssDNA (pssDNA) substrates (PubMed: 18503084, PubMed: 21050863, PubMed: 22135286). Also exhibits low-fidelity DNA synthesis, translesion synthesis and lyase activity, and it is implicated in interstrand-cross-link repair, base excision repair and DNA end-joining (PubMed: 14576298, PubMed: 18503084, PubMed: 19188258, PubMed: 24648516). Involved in somatic hypermutation of immunoglobulin genes, a process that requires the activity of DNA polymerases to ultimately introduce mutations at both A/T and C/G base pairs (By similarity).

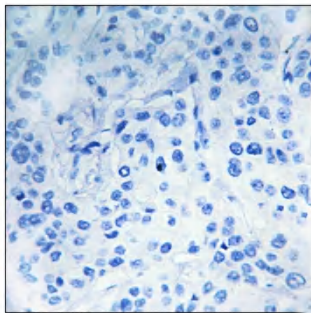
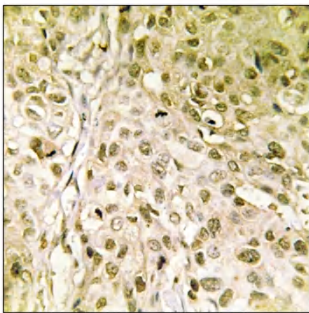
matters needing attention

Avoid repeated freezing and thawing!

Usage suggestions

This product can be used in immunological reaction related experiments. For more information, please consult technical personnel.

Products Images



Immunohistochemistry analysis of paraffin-embedded human breast carcinoma, using DNA Polymerase that Antibody. The picture on the right is blocked with the synthesized peptide.